

Spend time with everyone. Even the youngest children have things to say about their living space. Find a way that will lead you to the information : with conversation, drawings or games (refer to Key 2 / man / the ideal hut)■

S U M M E R

3. OBSERVE THE LAND

Enter into a sensitive and objective observation of the reality of the place :

- Find out about the culture of the area, the climate, the sunshine, the topography, the orientations, the views, the traffic, the accesses, the vegetation, the volumes and their orientations, the dominating elements, the houses facing the place, the neighborhood (hospital, cemetery...).
- Observe the site. Have a sympathetic look according to your inspiration and let the impressions come to you... simply observe, without judgment.

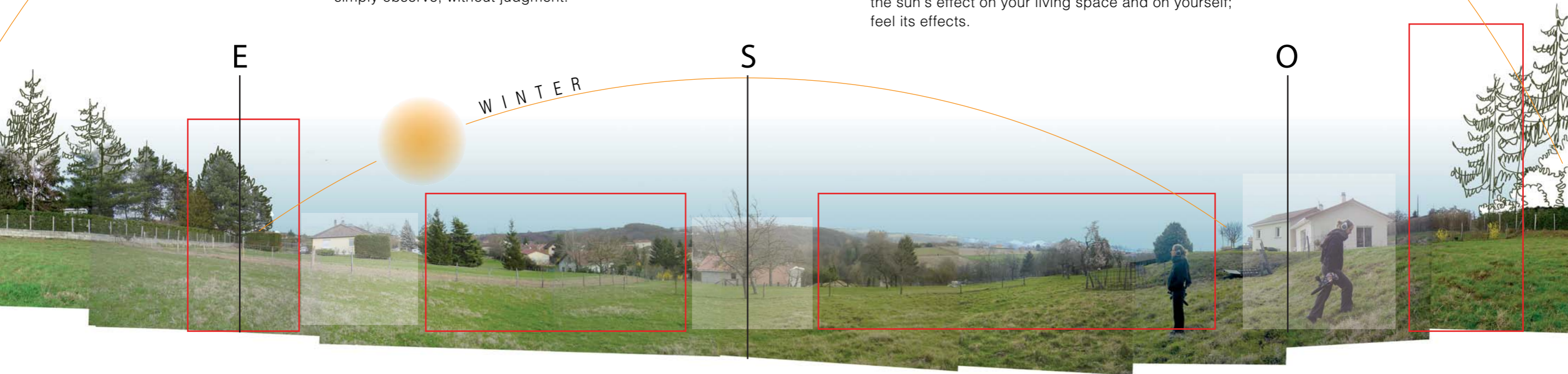
- Then soak up the atmosphere with all your senses awakened.
- Feel the quality of light, smell the odors released by vegetation and earth, listen to the sounds and to the natural and artificial noises that animate the place.
- Think about the taste of plants and fruits; imagine a garden and its harvest.
- Come in contact with the site, and let you be touched by the Web, the air, the earth and grass, barks, rocks ... and feel.
- Look in every direction in relation with the cardinal orientations by starting with the North.
- Observe the views, open spaces, obstacles, and geographic features.
- Imagine the sun path, its position in the morning, at noon, and in the evening. Observe it during the summer and again during the winter. Be conscious of the sun's effect on your living space and on yourself; feel its effects.

E

S

O

W I N T E R



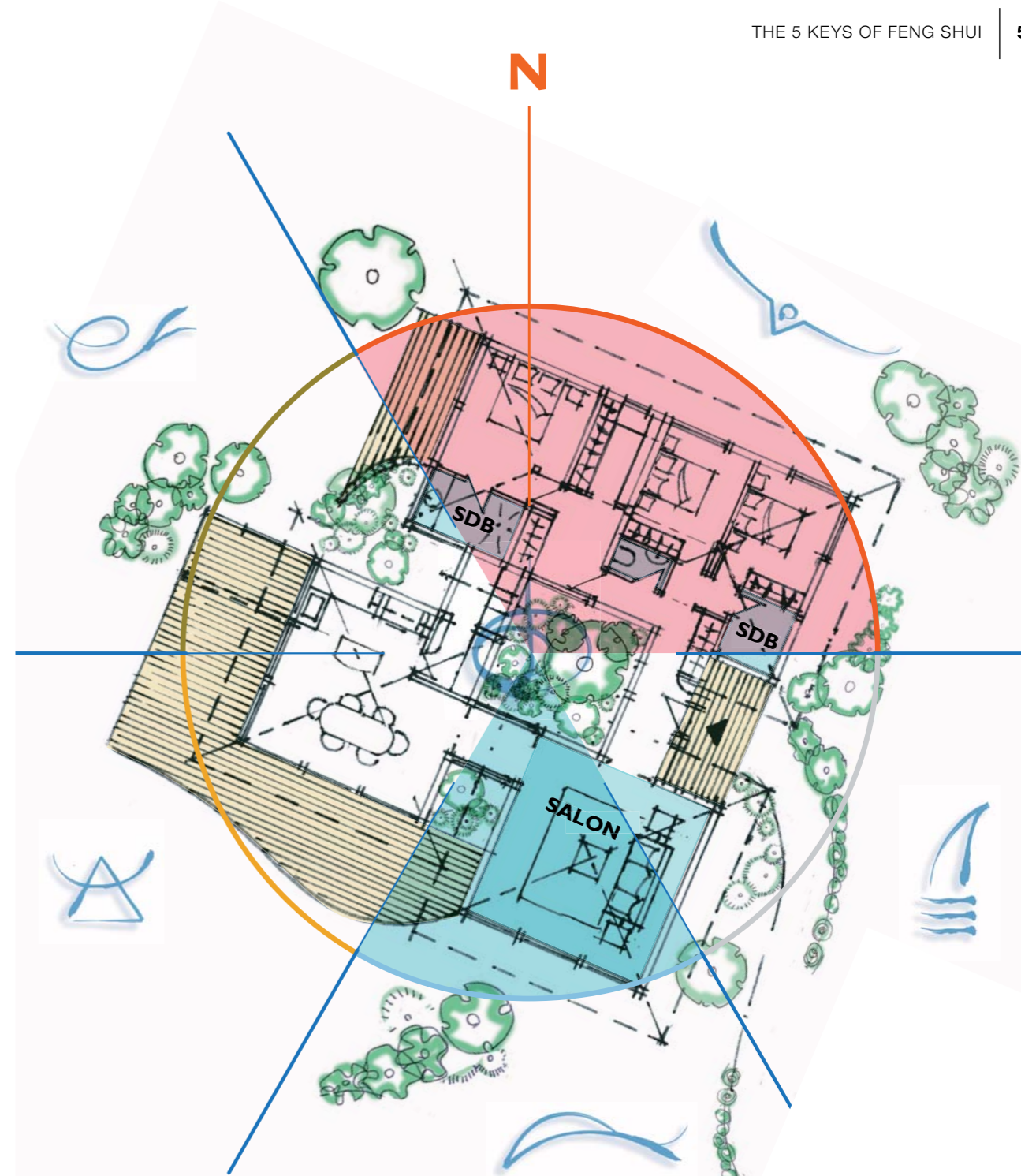
To analyze the energetic potential of each room, you put the transparent pakua over the draft of each of the dwelling's level, the office or any other living places.

The centre of pakua is set at the geographical centre of the space, with the North oriented to the magnetic North. After observing the relationship of each space with the Animals of pakua, we will take note of all the beneficial points, i.e. the rapport between a function and its sector, and the points to be examined i.e. the inadequate relationship between a function and the element/Animal of pakua.

For example¹ : After positioning pakua on the draft, you notice that the living room is situated in the sector Water/Dolphin and the bathroom in the sector Fire/Eagle; after consulting the telluro-logic Wheel in relation to this house's pakua, you may conclude :

- Beneficial point : the living room is situated in the sector Water/Dolphin This is propitious to communication, pleasure, sharing, the kids and the joy of living.
- To be seen : the bathroom in the sector Fire/Eagle will require an evaluation (check Key 4 – The 5 levels of action) in order to allow for the energies of Water to become dominant in this space dedicated to the pleasure of bathing and recuperating.

¹ Projet : J-F. & C. Mermillod - architects





One of the most frequent questions is about the place of the couple in bed. When standing opposite the bed and facing it, the man should be on the right side (Yang side) and the woman on the left (Yin side).

If you wish to place a mirror in the room, avoid locating it facing the bed, it is better to position it on the side. If the ceiling presents aggressive or heavy forms (wooden beams for instance), it is possible to neutralize them by fixing a fabric with beautiful bends that smooths the Web. In a couple, each one must have a bedside table with her/his own private space resembling her/him, with personal objects, pictures that inspire dreams. The bedroom is our secret garden and for some of us a sanctuary. Every object chosen with great attention may have a special symbolical meaning or history. Only persons for whom you have real affinity should be allowed in this intimate space.

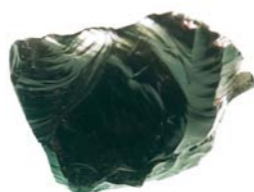


In order to activate the energies of the Eagle, an object with a touch of gold is sufficient (the Eagle's favorite color in the bedroom). There is a tendency to have the bath opening onto the bedroom, with or without a dressing room in between. Pay attention to the proximity of water and fire. It is better to clearly separate the bath from the bedroom, at least with a sliding door if both rooms communicate. Just the same, a working place in the bedroom is not a good idea; sleep is dedicated to dreams and not to work. If the exiguity of the space does not allow the separation of these two activities, find some sort of a partition to visually and energetically separate the two domains.



THE STONES OF THE SYMBOLIC ANIMALS

EAGLE



Onyx :

Perceptive mind, charisma, allows right decisions, work on the ego.

Fire Opal :

Protection, purification, dimension of the sacred commitment, endurance, gives the possibility to reach objectives, intensifies emotions and passion.

Obsidian :

Reflexion, introspection, astral travel, psychic monism

Pyrite :

Purification, energy of fire.

LION



White laced Agate :

Communication with wide spaces, recognition of the animal kingdom, gets in touch with the entities of nature.

Red Jasper :

Taste for power, sustained efforts, stops the bleeding.

Cat's eye :

Perceptive mind, astral magic, favors travels at subtle levels, prevents from robbery, attacks and aggressions.

Amethyst :

Wisdom, protection, ministry, authority, serenity, moderation, knowledge, humility, discretion, secret.

DOLPHIN



Moon stone :

discreet femininity, yin strength, works on the unconscious mind and dreams.

Green Jade :

protection during battles, justice, rectitude, lucidity, quick choices, creation, fecundity.

Pink Quartz :

opening of the heart, sense of beauty, joy of living, enjoyment of infants.

Turquoise :

goodness, kindness, incipient love, femininity, protection for the children, optimism.

5. WONDER

Progressively, by getting yourself familiarized with the Web and with this double positioning of consciousness, you will act on both sides of the Web : this is what you are doing when you create vacuity in your mind, both conscious within your "cockpit" and your anchorage to the ground, in an Earth/Sky relation. (key1 - energetic).

It will then be easy and pleasant for you to live currently the presence of the symbolic Animals as true companions whose absence will not go unnoticed..

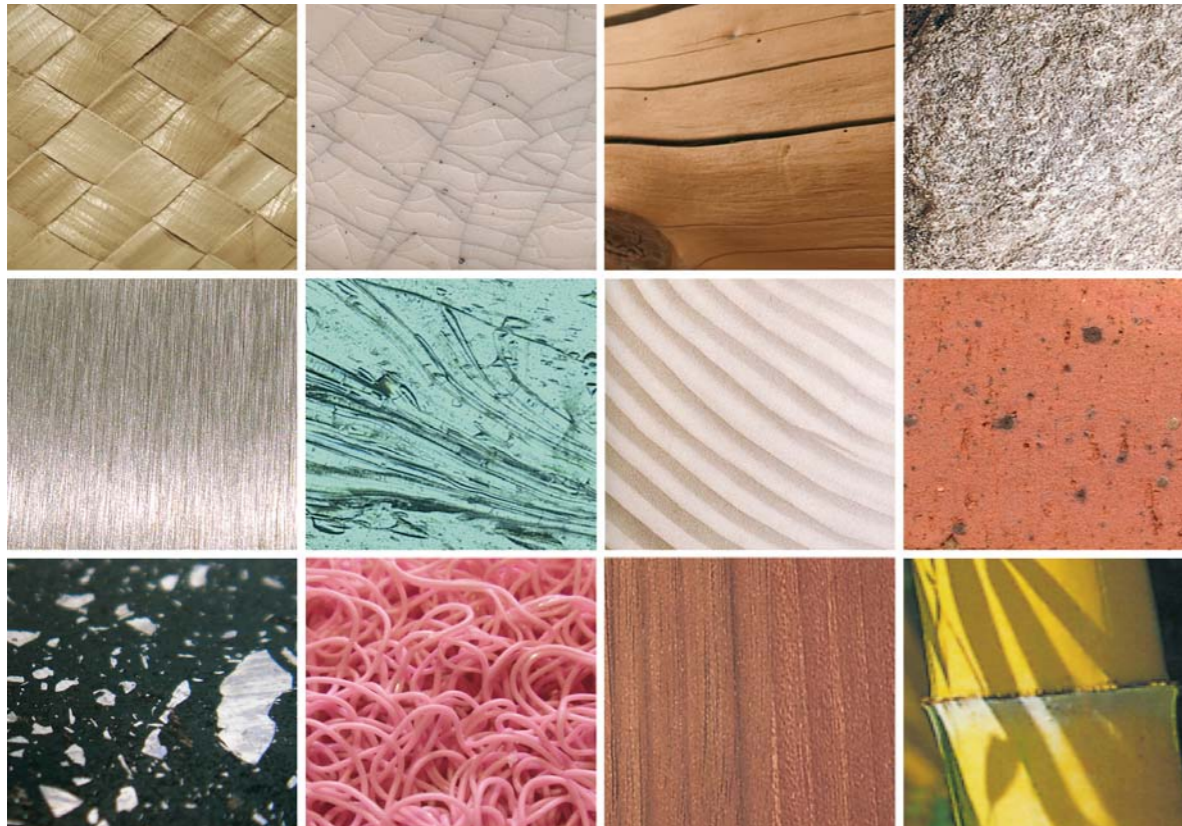
At this sensitivity level, the limit becomes blurred and with serenity you become one with your home and the environment.

This sweeping look as you observe acknowledging the immanent beauty of everything, becomes a constant source of wonder :

The light on a vase, the transparency of leaves, the light reflection on the watery surface of a bowl, the shadow that stretches itself as it takes different shapes depending on the encountered forms; the presence of a sculpture looks suddenly different, alive, permanent as it blends with living plants; the sound of birds hardly audible here and there fills your heart; the wind and the bells compose a melody endlessly renewed; the softness of the varnished wood as you touch it and the reassuring proportions of a handmade piece of furniture is sheer pleasure; this flavor of hot chocolate that makes you dream... the door bell rings... the children come in for the afternoon snack.



building materials

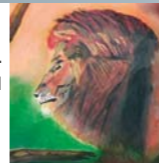


**FIRE
EAGLE**



glass - glass-wool - glass-fibre - lava stone - basalt - plant resin - stoneware
terra-cotta - ceramics - pumice-stone - artificial stucco - stone-wool
synthetic glue - lime - teak.

**AIR-METAL
LION**



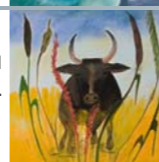
synthetic resin - plastic - acrylic paint - PVC - Polyurethane - steel - diamagnetic
steel - copper - bronze - iron - linoleum.

**WATER
DOLPHIN**



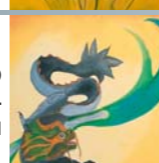
hemp - wickerwork - cotton - plaster - staff - coating - cob - rattan - bamboo
cellulose glue - water paint.

**EARTH
BULL**



brick - clay - gravel - sand - coco fibre - jute fibre.

**ETHER-WOOD
WINGED-
DRAGON**



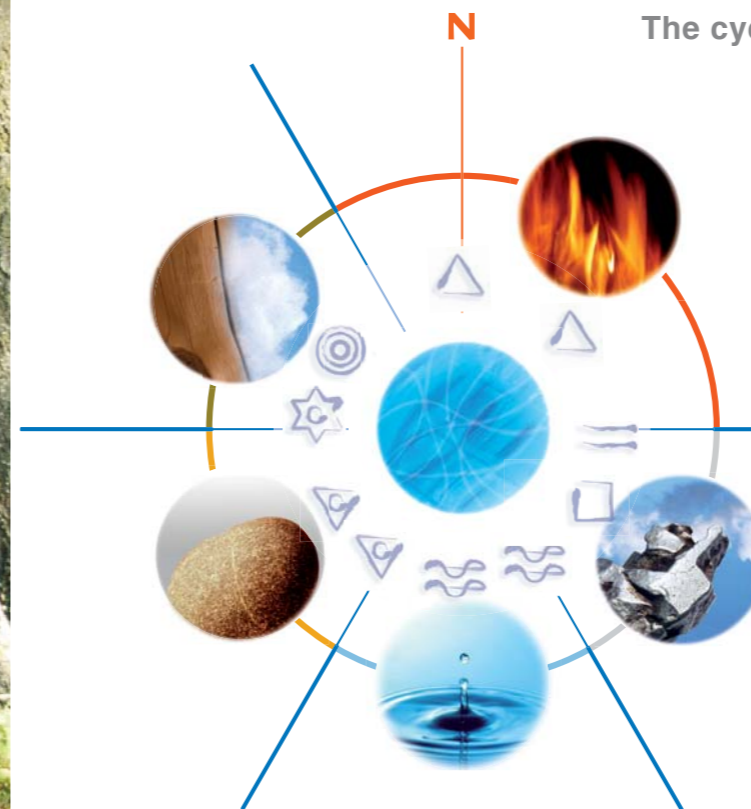
stone - oil paint - cement - concrete - granite - slate - cork - sandstone
marble - linen fibre - wood fibre - wood - varnish



2. Feng Shui of the present time or Telluro-logy of the habitat

1. THE SIX ELEMENTS OF THE RISING OF ENERGIES

From the origin of times, five elements were given. In the rising phase, a new element joins these : the Web, the sixth element. They are placed on the Pakua of the Telluro-logic Wheel, in the following order : Fire, Air, Metal, Water, Earth, Ether, Wood and Web. Metal and Wood are "sub-elements", to be joined with Air and Ether, respectively. Thus, for element Metal we will say "Air/Metal", and for element Wood we will say "Ether/Wood". So, there are not really eight elements for the rising but just six plus two sub-elements.



In its Alchemical representation, Fire is the Fire of consciousness and of "luminescence", which burns without being consumed. Air represents the "divine breath". Activated by Fire, it melts Metal which is the manifestation of Spirit in Matter. Then Metal is tempered in Water thus taking its final form. Metal delivers its information to Water which keeps the memory in order to irrigate the Earth with it. Ether couples with Wood and, via the element Earth, will transmute energies to the "other side" of the Web. Thus, Ether will give its identity to Wood so that it can constitute the source of the next Cycle.

The Web gathers everything in its grid and gives life to the Universal Snake who activates the great rising of energies.